

Kadaltilla / Adelaide Park Lands Authority

2023–2028 Strategic Plan

Acknowledgement of Country

The Kadaltilla / Adelaide Park Lands Authority (Kadaltilla) acknowledges the Kurna people as the traditional owners of the Adelaide Plains and pays respect to Elders past and present. Kadaltilla recognises and respects the cultural heritage, beliefs and relationship which the Kurna people have with the land and acknowledges that they are of continuing importance to the Kurna people living today.

Kadaltilla extends that respect to other Aboriginal Language Groups and other First Nations.

Kadaltilla is the principal advisor to both the Council and the State Government on the protection, management, enhancement and promotion of the Adelaide Park Lands.

Kadaltilla is a traditional Kurna word meaning Green place / Green lands / Parklands.

Contents

<u>Acknowledgement of Country</u>	<u>23</u>
<u>Message from the Presiding Member</u>	<u>45</u>
<u>Message from the Deputy Presiding Member</u>	<u>56</u>
<u>The Role of Kadaltilla in the Governance of the Park Lands</u>	<u>67</u>
<u>Our Strategy.....</u>	<u>89</u>
<u>Our Strategic Pillars</u>	<u>940</u>
<u>Cultural Value</u>	<u>1044</u>
<u>Environmental Performance</u>	<u>1243</u>
<u>Management and Protection.....</u>	<u>1445</u>
<u>Expert Advice.....</u>	<u>1647</u>
<u>Governance Structure</u>	<u>19</u>

Message from the Presiding Member

[Text to be inserted]

Message from the Deputy Presiding Member

[Text to be inserted]

The Role of Kadaltilla in the Governance of the Park Lands

The Kadaltilla / Adelaide Park Lands Authority (Kadaltilla) is the principal advisor to both the City of Adelaide and the State Government on the protection, management, enhancement, and promotion of the Adelaide Park Lands.

Kadaltilla is established pursuant to section 5 of the *Adelaide Park Lands Act 2005 (SA)* and operates as a subsidiary of the City of Adelaide, pursuant to section 42 of the *Local Government Act 1999 (SA)*. Kadaltilla acts in accordance with its Charter and as set out in the *Adelaide Park Lands Act 2005 (SA)*.

The inaugural meeting of the Authority was held on 7 February 2007 and its first full financial year of operation was 2007–2008. On 11 May 2023, the Minister approved a change to Kadaltilla’s Charter so that it would be branded as the ‘Kadaltilla / Adelaide Park Lands Authority’ (Kadaltilla).

The City of Adelaide and the State Government of South Australia are committed to protecting and enhancing the Adelaide Park Lands for the benefit of all South Australians.

The City of Adelaide manages about 80% of the Adelaide Park Lands. The State Government manages the remaining 20% which is predominantly comprised of the educational, institutional and biomedical precinct along North Terrace, but also includes the Adelaide Botanic Gardens and Botanic Park/Tainmuntilla.

The City of Adelaide, on behalf of its communities of the City of Adelaide and the State, is committed to ensuring that Kadaltilla delivers maximum benefit for the future of Adelaide’s Park Lands as the City of Adelaide’s defining feature.

Kadaltilla was established to undertake the following Functions, as set out in the Adelaide Park Lands Act 2005 (SA):

1. To undertake a key policy role with respect to the management and protection of the Adelaide Park Lands
2. To prepare, and as appropriate, to revise the Adelaide Park Lands Management Strategy in accordance with the requirements of the Adelaide Park Lands Act 2005 (SA)
3. To provide comments and advice on any management plan prepared by the Adelaide City Council or a State Authority under the Adelaide Park Lands Act 2005 (SA) or the Local Government Act 1999 (SA) that relates to any part of the Adelaide Park Lands; and to monitor and, as appropriate, to provide comments, advice or reports in relation to the implementation or operation of any such plan
4. To provide comments or advice in relation to the operation of any lease, licence or other form of grant of occupation of land within the Adelaide Park Lands
5. On the basis of any request or on its own initiative, to provide advice to the Adelaide City Council or to the Minister on policy, development, heritage or management issues affecting the Adelaide Park Lands
6. To promote public awareness of the importance of the Adelaide Park Lands and the need to ensure that they are managed and used responsibly
7. To ensure that the interests of South Australians are taken into account, and that community consultation processes are established, in relation to the strategic management of the Adelaide Park Lands
8. To administer the Adelaide Park Lands Fund
9. To undertake or support other activities that will protect or enhance the Adelaide Park Lands, or in any other way promote or advance the objects of the Adelaide Park Lands Act, 2005 (SA)

Our Strategy

Kadaltilla 2020–2025 Strategic Plan

The Adelaide Park Lands are the largest inner urban park system in Australia. Nationally Heritage listed for their unique design – they are the city’s lungs, backyard, playground, meeting space and more. They are there for everyone to enjoy, enhancing physical and mental well-being, and they secure Adelaide’s place as one of the planet’s most liveable cities.

Purpose

- To be the trusted voice on the Adelaide Park Lands which actively conserves, promotes, and enhances the environmental, economic, cultural, recreational, and social importance value of the Adelaide Park Lands

~~Board sought better alignment with the Act – Insert Content~~

Guiding Principles

- Preserve and strengthen the integrity of the Adelaide Park Lands
- Promote the values of the Park Lands – as Adelaide’s defining feature, and an internationally unique asset
- Contribute to the delivery of the City of Adelaide’s Strategic Plan and vision, and the State Government’s 30-year plan for Greater AdelaidePartner with Council and the State Government to advocate the benefits of the Adelaide Park Lands
- Advise Government at all levels on the management and usage of the Adelaide Park Lands for the benefit of all South Australian’s

Governance

- Maximise utilisation of skills, knowledge, and enthusiasm of the Board through effective meetings that foster dialogue and the development of shared thinking
 - Hold strategic workshops on major initiatives in the Adelaide Park Lands
 - Seek-Provide early input into issues relating to the Park Lands to ensure Kadaltilla’s advice is timely and relevant
 - Monitor the implementation of major projects developments subsequent to Kadaltilla advice arising from the Adelaide Park Lands Management Strategy
 - Engage with the State Government as their key advisory Board to the Park Lands
 - Scrutinise functions of the Board to ensure alignment with the Adelaide Park Lands Act 2005
 - Advocate for the value of Kadaltilla as a proactive, accountable, independent, skills-based board that advises on Park Lands management and protection
-

Our Strategic Pillars

CULTURAL VALUE

Promote the cultural values of the Park Lands including Kaurua culture, heritage, and wellbeing

ENVIRONMENTAL PERFORMANCE

Maintain and improve climate resilience and the landscape values of the Park Lands

MANAGEMENT AND PROTECTION

Treat the Park Lands holistically with an adaptive future focused approach

EXPERT ADVICE

Function as the peak advisory body for policy, development, heritage, and management of the Park Lands based on sound data and evidence

Cultural ValueE

Promote the cultural values of the Park Lands including Kaurna culture, heritage, and wellbeing

APLMS Signature Projects

- Cultural Burn (Tuthangga)
- Place of Reflection (Murlawirrapurka)

Key Actions Objectives

- 1.1 ~~Make~~ Seek Kaurna cultural ~~authenticity~~ ~~ority~~ ~~ine~~ ~~intrinsic~~ ~~to~~ everything we do
- 1.2 Assist with Kaurna cultural mapping
- 1.3 Advocate for the featuring of the Adelaide Park Lands in ~~Designed for Life, South Australian Tourism Commission, and other~~ relevant promotional campaigns
- ~~1.4 Host an annual community forum~~
- ~~1.5~~ 4 ~~Support~~ Champion the development of World Heritage listing nomination

Measures of Success Initiatives

- ~~*1.1 Each matter that comes before the Board considers~~ Partner with Kaurna culture authority
- ~~*1.2 Support~~ Kaurna Cultural mapping ~~progress~~ used to inform Kadaltilla considerations by 2024
- ~~1.3~~ Increased promotion of Park Lands in all relevant tourism promotional campaigns (City of Adelaide, South Australian Tourism Commission etc) Develop specialist branding and promotion of the Authority Kadaltilla and the Park Lands
- ~~1.4~~ One public forum held per year
- ~~* Support State Government support~~ Regularly review for tentative World Heritage listing ~~submission by 2026~~ submission — end of 2024 progress

Measures of Success

- 1.1 Each matter that comes before Kadaltilla considers Kaurna culture
 - 1.2 Kaurna Cultural mapping completed and used to inform Kadaltilla considerations by 2024
 - 1.3 Adelaide Park Lands featured in relevant promotional campaigns
 - 1.4 State Government support for World Heritage listing submission by 2026
-

Environmental Performance

Maintain and improve community connection with climate resilience and the natural and cultural landscape values of the Park Lands

APLMS Signature Projects

- Pakapakanthi Wetlands
- Karrawirra Pari Restoration
- Reimagined Rymill Park (Murlawirrapurka)

Key Actions Objectives

- 2.1 Define, protect, and enhance landscape values and design qualities
- 2.2 ~~Provide advice in relation to~~ Promote ecologically sustainable initiatives and monitor tree canopy cover, biodiversity, and environmental sustainability and improvements and design quality
- 2.3 Consider climate resilience in everything we do
- 2.4 Research the impact of climate change on the Park Lands
- 2.3 ~~Regularly review River Torrens water quality, amenity and activation~~
- 2.4.5 Increase the accessibility of evidence-based information

Initiatives

- 2.1 Establish performance principles for the Adelaide Park Lands
- 2.2 Regularly review tree canopy cover, biodiversity, and environmental sustainability in the Park Lands
- 2.3 Undertake a climate impact assessment of the Adelaide Park Lands
- 2.4 Develop a better understanding of environmental values and trends
- 2.5 Regular online Adelaide Park Lands updates (inclusive of events, trends, gardens and botanical features and items dealt with at Kadaltilla)

Measures of Success

- 2.1 Landscape values of the Adelaide Park Lands have been defined, protected, and enhanced
- 2.2 Ecologically sustainable initiatives promoted, and tree canopy cover, biodiversity, and environmental sustainability and design quality have been regularly reviewed
- 2.3 Deliver a climate impact assessment of the Adelaide Park Lands
- 2.4 Environmental values and trends presented to Kadaltilla
- 2.5 Customers are well informed through regular online Adelaide Park Lands updates

Measures of Success

- ~~Establish performance principles for the Adelaide Park Lands~~
 - ~~Deliver a climate impact assessment of the Adelaide Park Lands~~
 - ~~Conduct a landscape review to inform the next Adelaide Park Lands Management Strategy~~
 - ~~Develop a better understanding of environmental values and trends~~
 - ~~Board Members are well informed through regular updates~~
 - ~~Regular online Adelaide Park Lands updates (inclusive of events, trends, gardens and botanical features and items dealt with at Kadaltilla)~~
-

Management ~~a~~And Protection

Treat the Park Lands holistically with an adaptive future focused approach~~long term vision~~

APLMS Signature Projects

- Pakapakanthi Wetlands
- Karrawirra Pari Restoration
- Reimagined Rymill Park (Murlawirrapurka)

Key Actions Objectives

3.1 Monitor delivery of priority projects in Review and improve the Adelaide Park Lands Management Strategy which includes prioritisation of projects

3.2 Advocate for and establish Funding Mechanisms to support delivery of the Adelaide Park Lands Management Strategy ~~3.2 Review of provisions to influence the Planning and Design Code including National Heritage overlay~~

3.3 ~~Ongoing rR~~ Review of the City of Adelaide Community Land Management Plans and State Government Management Plans

3.4 Advocate for progression of State Heritage Listing by the State Government

3.5 Assess the landscape value of the Adelaide Park Lands including economic, environmental and cultural significance

Initiatives

3.1 Regular review of the progress of the Adelaide Park Lands Management Strategy priority projects

3.2 Identify funding opportunities for priority projects in the Adelaide Park Lands Management Strategy

3.3 Partner with the State Government to advise on management plans for areas of Adelaide Park Lands controlled by State Government

3.4 Continued support provided for the State Heritage listing

3.5 Undertake an assessment of economic, environmental and cultural significance of the Adelaide Park Lands

Measures of Success

3.1 Adelaide Park Lands Management Strategy priority projects implemented

3.2 Funding secured for priority projects in the Adelaide Park Lands Management Strategy

3.3 Advice provided to the State Government for the preparation of management plans for areas of Adelaide Park Lands controlled by State Government

3.4 State Heritage listing progressed by the State Government

3.5 Board Members are well informed through regular updates

Measures of Success

- Funding secured for priority pAn updated in the Adelaide Park Lands Management Strategy in an easy to use format with a series of (measurable and achievable) prioritised projects
- Adelaide Park Lands Management Strategy informs Planning and Design Code and related policy for the Park Lands
- Advice sought and provided for the preparation by the State Government of management plans for areas of Adelaide Park Lands controlled by State Government
- State Heritage listing achieved by the State Government
- Board Members are well informed through regular updates

ADVICEExpert Advice

Function as the peak advisory body for policy, development, heritage, and management of the Park Lands based on sound data and evidence

APLMS Signature Projects

- Pakapakanthi Wetlands
- Karrawirra Pari Restoration
- Reimagined Rymill Park (Murlawirrapurka)

Key Actions Objectives

- 4.1 Provide advice on plans, projects, and policies for the Adelaide Park Lands
- 4.2 Engage with City of Adelaide and State Government including input into ~~the Riverbank Masterplan (Karrawirra)~~ State Government initiatives
- 4.3 Review leasing and licensing and event management policies together with other relevant Park Lands use policies
- 4.4 Strengthen Kadaltilla's engagement with City of Adelaide, State Government, and adjoining Councils
- 4.5 Increase the profile of the Kadaltilla Board

Initiatives

- 4.1 Advice of Kadaltilla is endorsed and adopted
- 4.2 State Government engages with Kadaltilla on State Government initiatives
- 4.3 Kadaltilla makes policy submissions on State and Local Government matters where deemed necessary
- 4.4 Strategic stakeholder engagement on Adelaide Park Lands related matters
- 4.5 Create and maintain a social media profile detailing the business of Kadaltilla

Measures of Success

- 4.1 Advice of Kadaltilla is endorsed and adopted
- 4.2 State Government engages with Kadaltilla on State Government initiatives
- 4.3 Kadaltilla makes policy submissions on State and Local Government matters where deemed necessary
- 4.4 Strategic stakeholder engagement on Adelaide Park Lands related matters
- 4.5 Create and maintain a social media profile detailing the business of Kadaltilla

Measures of Success

- ~~Advice of Kadaltilla is endorsed and adopted~~
- ~~Senior State Government Officers/consultants engages with Kadaltilla on Riverbank Masterplan (Karrawirra)~~
- ~~Kadaltilla makes policy submissions on State and Local Government matters where deemed necessary~~
- ~~Meetings with adjoining Councils to discuss Adelaide Park Lands Management Strategy and other current Adelaide Park Lands usage related policy~~

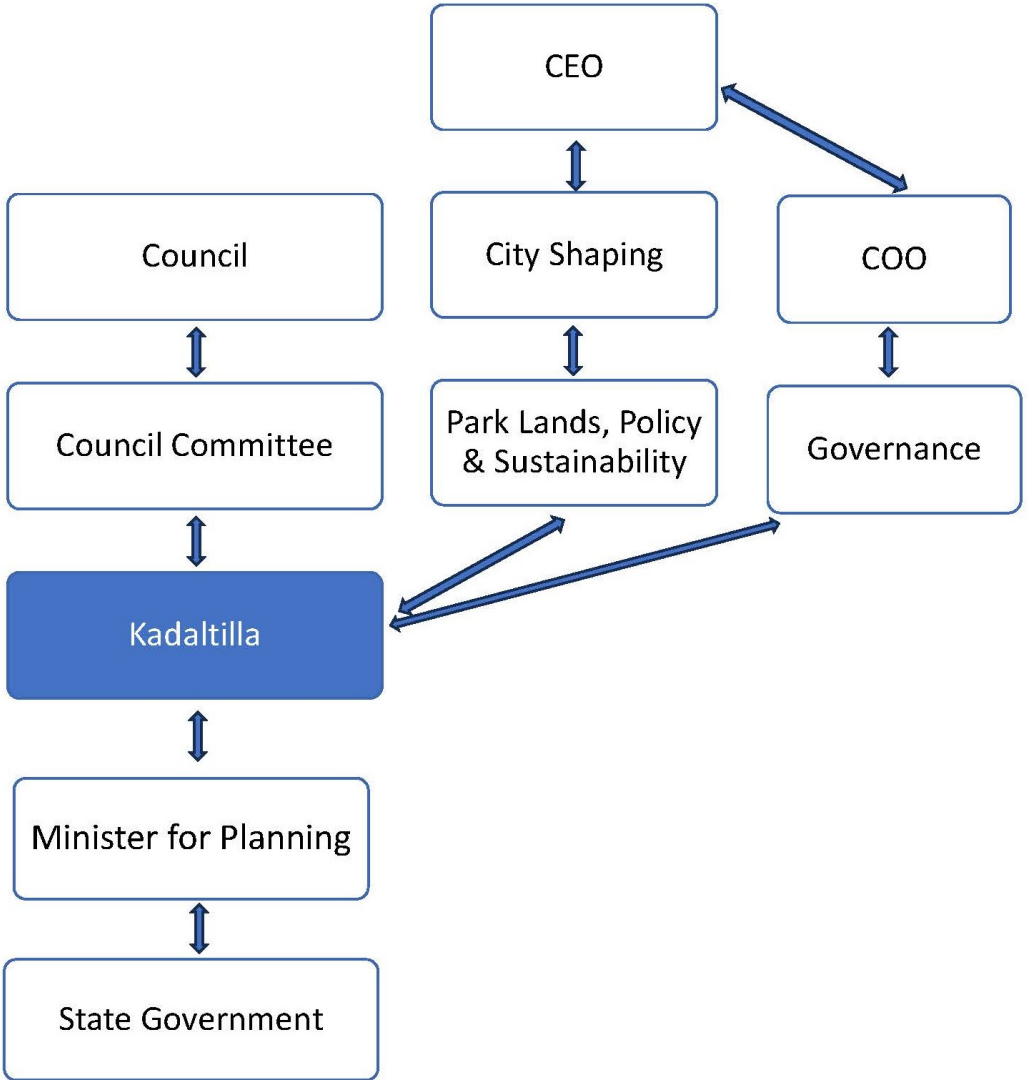
DATA AND INSIGHTS

Request data to provide understandings and insights to assist with decision making

- ~~Kaurna Cultural Mapping~~
- ~~Use of Park Lands~~
- ~~Wellbeing dashboard~~
- ~~Cultural tours~~
- ~~Attendances and visitation~~
- ~~Community wants and needs~~
- ~~Heat mapping~~
- ~~Biodiversity~~

- Mapping of carbon abatement sequestration
- Landscape changes and sustainability
- Metrics relating to % of tree canopy
- Net Gain/loss of Park Lands
- Extent of Leases and licences
- Built form and building footprints
- Changes in use
- How the Park Lands have developed and changed
- Projects and policies assessed and recommended by Kadaltilla
- Mapping of projects and investment

Governance Structure



To be the trusted voice on the
Adelaide Park Lands which
actively conserves, promotes,
and enhances the
environmental, economic,
cultural, recreational, and social
importance value of the Adelaide
Park Lands

P [8203 7203](tel:82037203)

E kadaltilla@cityofadelaide.com.au

Kadaltilla
Adelaide Park Lands Authority